



University of Missouri-St. Louis

Study Abroad at

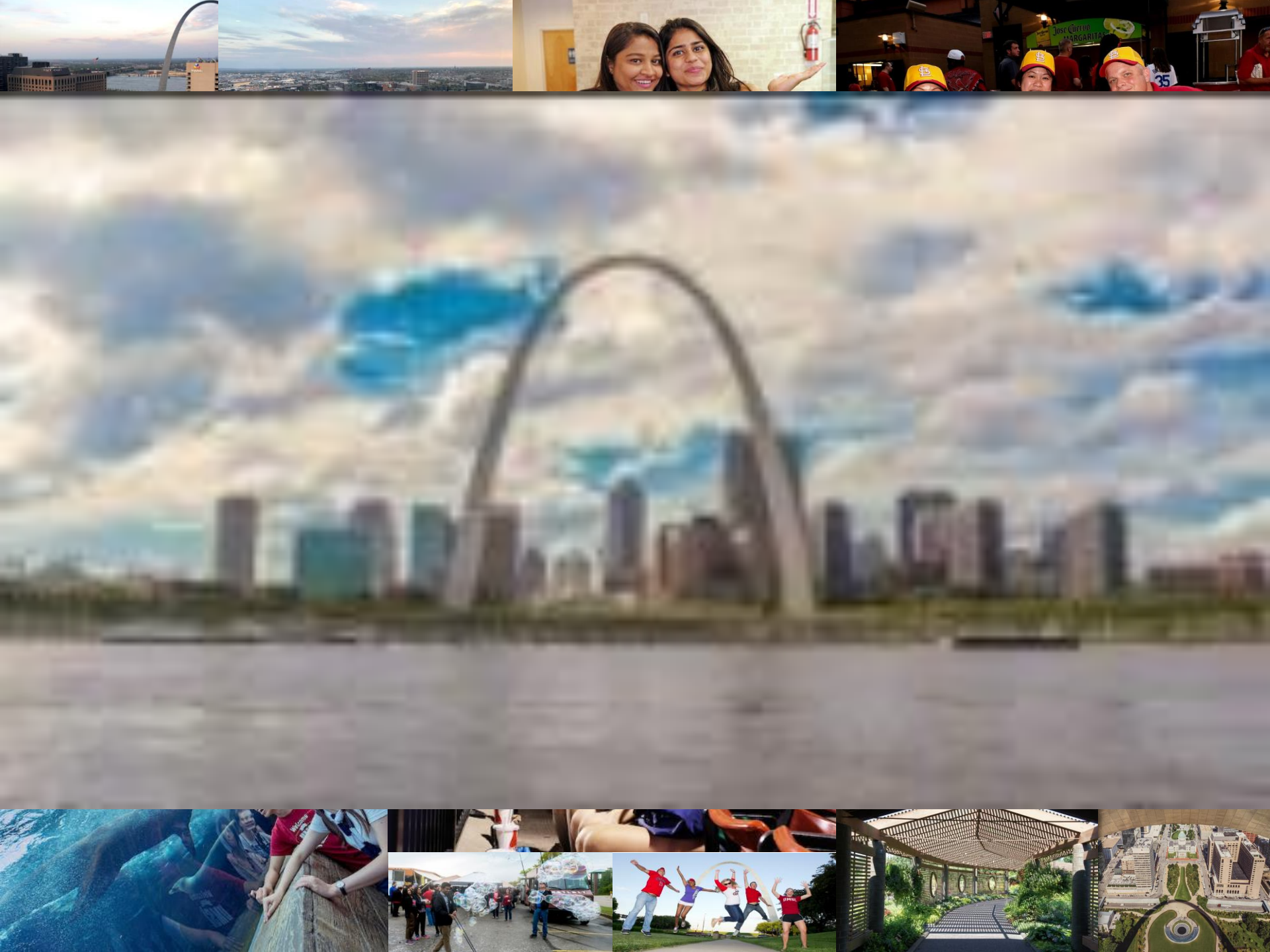
UMSL



Welcome to St. Louis



“Why doesn’t everyone visit St. Louis, Missouri? And frankly, move there?
As American cities go, it’s as vibrant, diverse and hip as it gets”
~*Forbes Magazine*



Welcoming you to the 'Lou

A new experience around every corner!

- Visit the iconic [Gateway Arch](#)
 - Watch a live baseball game, hockey game, concert or performance
 - Walk the trails at [Forest Park](#) – at 1,300 acres it's bigger than Central Park in NYC
 - Experience STL's FREE attractions, like the [St. Louis Zoo](#) and the [Art Museum](#)
- * STL's light rail system, public buses and ride share apps making getting around simple!



A photograph of the University of Missouri-St. Louis campus, featuring a large, modern building with a green roof and a central tower, surrounded by green lawns, trees, and a small pond. The image is framed by a white diagonal line.

University of Missouri–St. Louis

UMSL

16,000 students from 49 states
and 65+ countries.

Ranked Top 25 nationally in
International Business (UG)

Dual AACSB accreditation in
business and accounting

Four-time recipient of the
Higher Education Excellence in
Diversity Award

University of Missouri–St. Louis

College of Arts and Sciences*
College of Business Administration*
College of Education*
College of Nursing
School of Social Work*
UMSL/WUSTL Joint Engineering Program

The logo for the University of Missouri–St. Louis (UMSL) is displayed in a large, bold, red serif font. The letters are closely spaced and have a slight shadow effect, giving it a three-dimensional appearance. The logo is positioned in the bottom right corner of the slide, set against a light blue background with a faint image of a campus building.

UMSL

UNDERGRADUATE PROGRAMS

College of Arts and Sciences

Actuarial Science (BS)
Anthropology (BA)
Biochemistry and
Biotechnology (BS)
Biology (BA, BS)
*Cell and Molecular; Ecology,
Evolution and Conservation*
Chemistry (BA, BS)
Communication (BA)
*Applied Visual Communication,
Interpersonal Communication,
Mass Communication,
Strategic Communication*
Computer Science (BS)
Computing Technology (BS)
Criminology and
Criminal Justice (BS)
Cybersecurity (BS)
Computer Science
Economics (BA, BS)
English (BA)
Fine Arts (BFA)
*Art Education, Graphic Design,
Studio Practice*
History (BA)
Interdisciplinary Studies (BIS)
International Relations (BA)
Liberal Studies (BLS)
Mathematics (BA, BS)
Data Science, Fiscal Mathematics
Modern Language (BA)
*French, Japanese, Spanish,
Dual Language Professional Track*

Music (BA)
Music (BM)
*Composition, Elective Studies
in Business, Jazz Studies,
Music Education, Performance, Theory*
Organizational Leadership (BA)
Philosophy (BA)
Physics (BA, BS)
*Astrophysics, Engineering, General,
Biophysics*
Political Science (BA)
Psychology (BA, BS)
Public Policy and Administration (BSPPA)
Public Administration, Public Policy
Sociology (BA, BS)
Exploratory Pathways (formerly Undeclared)
umsl.edu/go/exploratory-pathways
*Business and Geopolitics
Creativity and Design
Education and Social Change
The Human Experience
The Interconnected World
Mathematics and Scientific Research
Technology and Innovation*

College of Business Administration

Accounting (BS)
Business Administration (BSBA)
*Entrepreneurship, Finance,
International Business,
Management, Marketing,
Supply Chain Management*
Cybersecurity (BS)
Information Systems and Technology
Information Systems and Technology (BS)

College of Education

Early Childhood Education (BSEd)
Early Childhood Education (BSEd)
Special Education
Educational Studies (BES)
*Early Childhood, Exercise Science
and Wellness, Park and Museum
Program, Youth and Adult Development*
Educational Studies (BES)
Social Entrepreneurship
Elementary Education (BSEd)
*Special Education, TESOL,
Special Education and TESOL*
Middle School Education (BSEd)
*Language, Math, Science,
Social Studies*
Music Education (BMEd)
Physical Education (BSEd)
Secondary Education (BSEd)
*Biology, Chemistry, English,
Foreign Language (French, Spanish),
Mathematics, Physics, Social Studies*
Sport Management (BS)

College of Nursing

Nursing (BSN)
Traditional, Accelerated, RN to BSN

School of Social Work

Social Work (BSW)

UMSL/Washington University Joint Undergraduate Engineering Program

Civil Engineering (BSCE)



[Visit the Rec Center](#)



[Learn Something New](#)



[Explore Campus](#)

Life @ UMSL

[Get Involved](#)



[Connect with Faculty](#)



[Make New Friends](#)



Recreation and Wellness Center



Admission Requirements

- Submit transcripts & exam Scores
 - Grad students: check degree profile
 - Visa: evidence of funds, passport
- GPA = 2.3-2.5/4.0 scale
= 3.0/4.0 scale
 - TOEFL: 61, IELTS: 5.5
Duolingo: 85, PTE-A: 44
 - Grad students: check degree profile

**Want to see more of our
campus? Join us on a
guided virtual tour here:**
<http://www.umsl.edu/admissions/tours/Virtual%20Tour.html>

**Have questions for UMSL
Education Abroad?**
Contact us at:
studyabroad@umsl.edu

UMSL
We transform
LIVES
UNIVERSITY OF MISSOURI-ST. LOUIS



Annie Hyde: ahyde@umsl.edu